



Yarra Strategic Plan Draft
Australian Institute of Landscape Architects Review

Australian Institute of Landscape Architects (AILA)

- Peak organization for the **landscape architecture profession in Australia**
- Represents **over 3,500 members**
- Professional services include **strategic planning, urban design, open space design and natural resource management.**
- **Creates benefits for communities** by delivering meaningful landscape design that is adaptive to **social and environmental** change.
- **Supports environmental stewardship** through thoughtful leadership in planning, design, construction and management of quality open spaces.



Australian Institute of
Landscape Architects

Commendations

- **Acknowledgement of Country**, river as cultural landscape, meaningful collaboration with Wurundjeri Woi Wurrung Traditional Owners
- **Community access to public space** for health and well-being in the context of population boom, aging communities
- **Climate emergency**, biodiversity loss, urban heat island effect
- **Integrated management approach**, appropriate to landscape of this complexity, scale and importance
- **Governance approaches, engagement with communities** in development of strategy



Australian Institute of
Landscape Architects

Recommendations

CONTEXT: Holistic, integrated approach

CONTROLS: Public *and* private land

COMMUNICATION: Clarity around governance

CONNECTIVITY: Future extensions of public parkland



Australian Institute of
Landscape Architects

CONTEXT

Holistic, integrated approach

Integrated precincts vs. 13 'significant sites',
outlined clearly within strategy
(Points 69, 70, 71)



CONTROLS

Public *and* private land

Measurable limits/controls relating to proposed development, outlined clearly within strategy
(Point 67)



COMMUNICATION

Clarity around governance

Diagram providing overview of governance,
including role of Traditional Owners

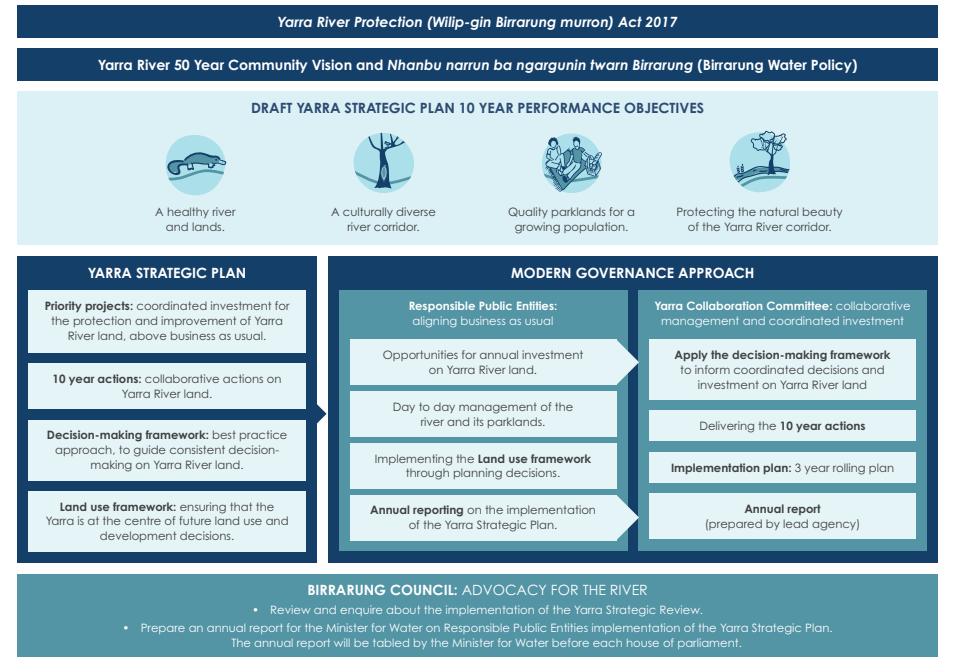
WURUNDJERI WOI WURRUNG PEOPLE AND CUSTODIANSHIP OF THE BIRRARUNG

WILIP-GIN BIRRARUNG MURRON

We the Woi wurrung, the First People, and the Birrarung, belong to this Country. This Country and the Birrarung are part of us. The Birrarung is alive, has a heart, a spirit and is part of our Dreaming. We have lived with and known the Birrarung since the beginning. We will always know the Birrarung.

Bunjil the great Eagle, the creator spirit, made the land, the sky, the sea, the rivers, flora and fauna, the lore. He made Kulin from the earth. Bunjil gave Waa, the crow, the responsibility of Protector. Bunjil's brother, Palliyang, the Bat, created Bagarook, women, from the water. Since our beginning it has been known that we have an obligation to keep the Birrarung alive and healthy – for all generations to come.

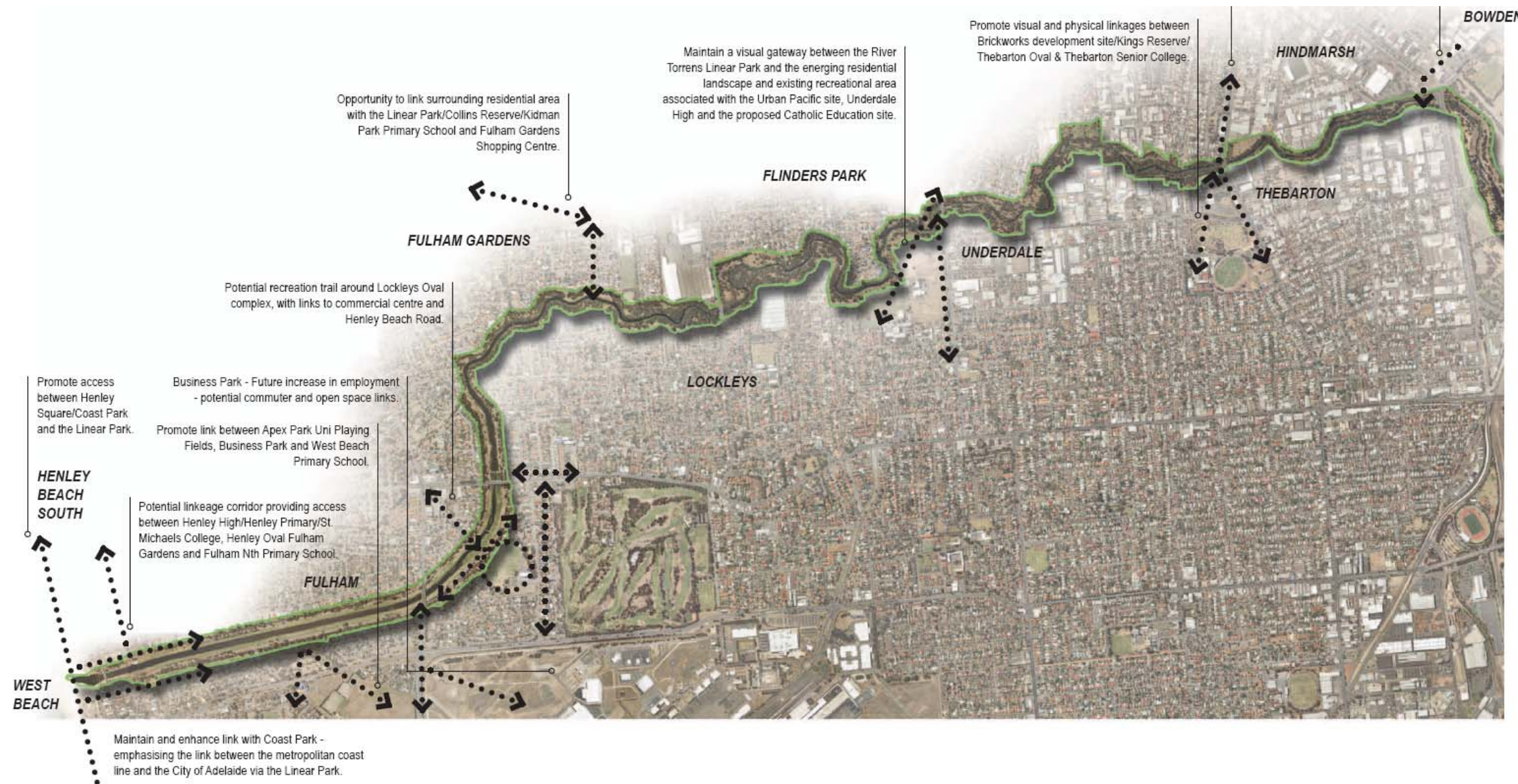
Figure 2: Yarra Strategic Plan framework



CONNECTIVITY

Future extensions of public parkland

Concrete aims / strategic land acquisitions around this ambition to be identified clearly in document. Ideally, the plan achieves a continuous parkland corridor, to match the document's vision with a public space legacy



Opportunity to link surrounding residential area with the Linear Park/Collins Reserve/Kidman Park Primary School and Fulham Gardens Shopping Centre.

Maintain a visual gateway between the River Torrens Linear Park and the emerging residential landscape and existing recreational area associated with the Urban Pacific site, Underdale High and the proposed Catholic Education site.

Promote visual and physical linkages between Brickworks development site/Kings Reserve/Thebarton Oval & Thebarton Senior College.

Potential recreation trail around Lockleys Oval complex, with links to commercial centre and Henley Beach Road.

Promote access between Henley Square/Coast Park and the Linear Park.

Business Park - Future increase in employment - potential commuter and open space links.

Promote link between Apex Park Uni Playing Fields, Business Park and West Beach Primary School.

Potential linkage corridor providing access between Henley High/Henley Primary/St. Michaels College, Henley Oval Fulham Gardens and Fulham Nth Primary School.

Maintain and enhance link with Coast Park - emphasising the link between the metropolitan coast line and the City of Adelaide via the Linear Park.

HENLEY BEACH SOUTH

WEST BEACH

FULHAM

LOCKLEYS

FULHAM GARDENS

FLINDERS PARK

UNDERDALE

THEBARTON

HINDMARSH

BOWDEN

Recommendations

CONTEXT: Holistic, integrated approach

CONTROLS: Public *and* private land

COMMUNICATION: Clarity around governance

CONNECTIVITY: Future extensions of public parkland



Australian Institute of
Landscape Architects